

Research Capability Programme

Peter Knight
Group Programme Director



Guide to Acronyms

UKCRC – United Kingdom Clinical Research Collaboration

CRDB – Care Record Development Board

NIGB – National Information Governance Board

NHS CRS – NHS Care Records Service

SCR – Summary Care Record

DCR – Detailed Care Record

SUS – Secondary Uses Service

R&D – Research and development

Background

- Dec 2005 – Chancellor's commitment
- Jan 2006 – DH strategy *Best Research for Best Health*
- July 2006 – R&D advisory group to NHS CFH established by UKCRC
- June 2007 – UKCRC R&D advisory group report
- August 2007 – CRDB SUS working group report
- August 2007 – Research Capability Programme initiated
- September 2007 – Health Select Committee Report

What is the Research Capability Programme?

It is a formal programme of work within NHS CFH looking at how information held in the National Programme for IT systems may be used for research purposes.

It will take forward the recommendations in the “Report of Research Simulations” produced by the UKCRC Advisory Group to NHS CFH.

It has a Senior Responsible Owner, who is a nominee of the DH Director-General of R&D. A programme board and external reference group provide strong governance.

The primary objective is to enable research to achieve its full potential as a “core” activity for healthcare, alongside other uses of NHS data that lead to improvements in the quality and safety of care.

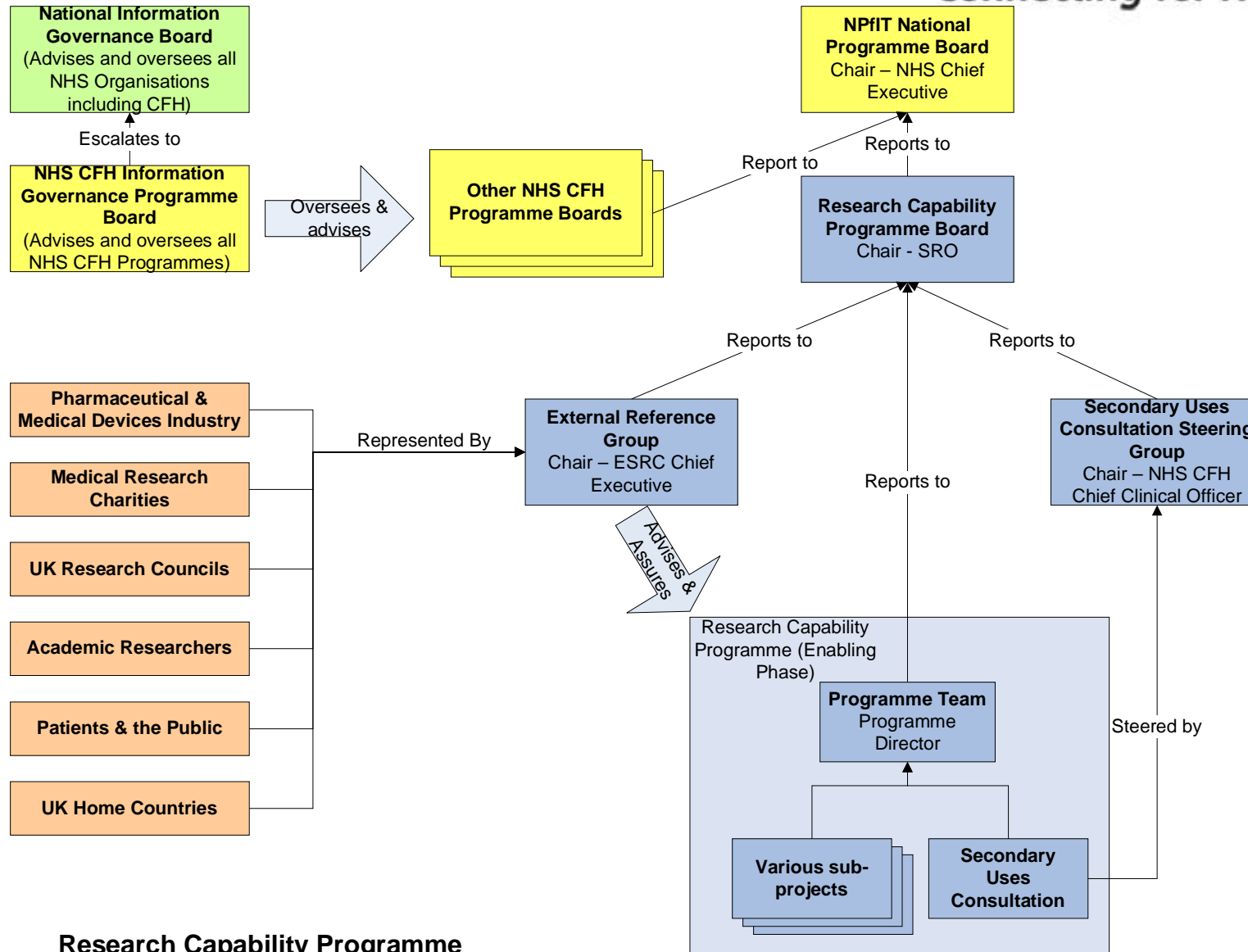
Programme Phases

Phase 1	Enabling phase	Aug 07 – June 08
Phase 2	Full programme Six stage programme	Jul 08 onwards

Phase 2 the Full Programme is well underway and has six stage to complete by March 2011 before the Programme is closed and the services are handed over to business as usual. There will be functionality operational in 2009 to the research community

Delivered by six work-streams

- Technical Architecture
- Functional Scope and Business Case
- Data Quality, Standards and Linkage
- Information Governance and Threat Assessment
- Infrastructure
- Communications and Stakeholder Engagement



**Research Capability Programme
Governance Structures & Organisation**

Enabling Phase

Has achieved:

- Appointment of Programme Chair (SRO) and Group Programme Director
- Establishment of a Programme Board
- An agreed phase 1 **Programme Initiation Document**
- Agreed terms of reference for an **External Reference Group** operating under the aegis of the Office for Strategic Co-ordination of Health Research (OSCHR)
- Engagement with **stakeholders** to create a common vision
- Substantial progress on the recommendations identified in the UKCRC report
- A defined scope of work for the Programme and for related initiatives
- Production of a high level requirements documentations **PD00 to PD20**
- An approved **Strategic Outline Case**
- An agreed **Programme Initiation Document** for the Full Programme
- Development of the genesis of an **Outline Business Case**
- Completed an Office of Government Commerce **Gateway 0** review

Full Programme Stages

Implementation Programme

- Stage 1 – Procurement, Pilot and Proof of Concept
- Stage 2 – Mobilisation
- Stage 3 – Building the infrastructure
- Stage 4 – Federating data sources
- Stage 5 – Transfer to Business as usual
- Stage 6 – Programme closure and benefits realisation

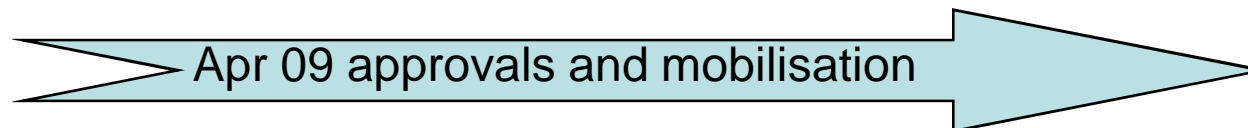
RCP – Full Programme Stage 1

The Programme structure:

- Business Cases and Procurement Project
- Commissioning of the IG Services Programme
- Pilot Programme
- Public Consultation Project
- Programme Communication
- Programme Assurance

RCP – Stage 1 activities Jun to Mar 09

Jun to Aug	Sept to Dec	Jan to Mar
Outline Business Case (OBC)		Public Procurement of services using catalogues suppliers where possible.
Input/Output Based Specification (I/OBS)1	I/OBS 2	
Procurement Strategy (PS) 1	PS 2	
Service Model (SM) 1	SM 2	Full Business Case
Approval of Final OBC		



More information

www.connectingforhealth.nhs.uk/systemsandservices/research

From there you will also find links to:

- The DH Strategy *Best Research for Best Health*
- The report of the UKCRC Advisory Group to CFH
- The report of the CRDB SUS Working Group